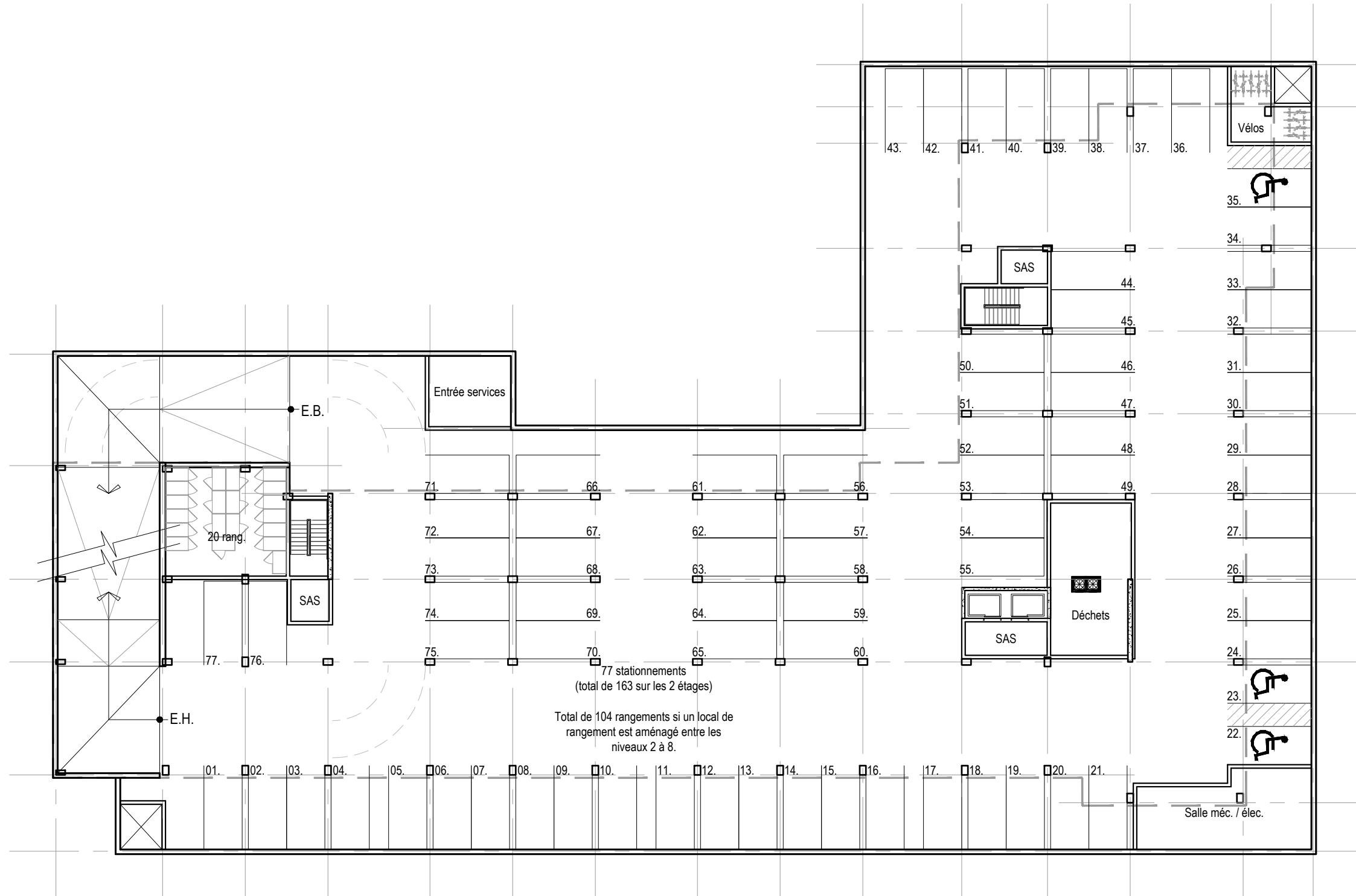
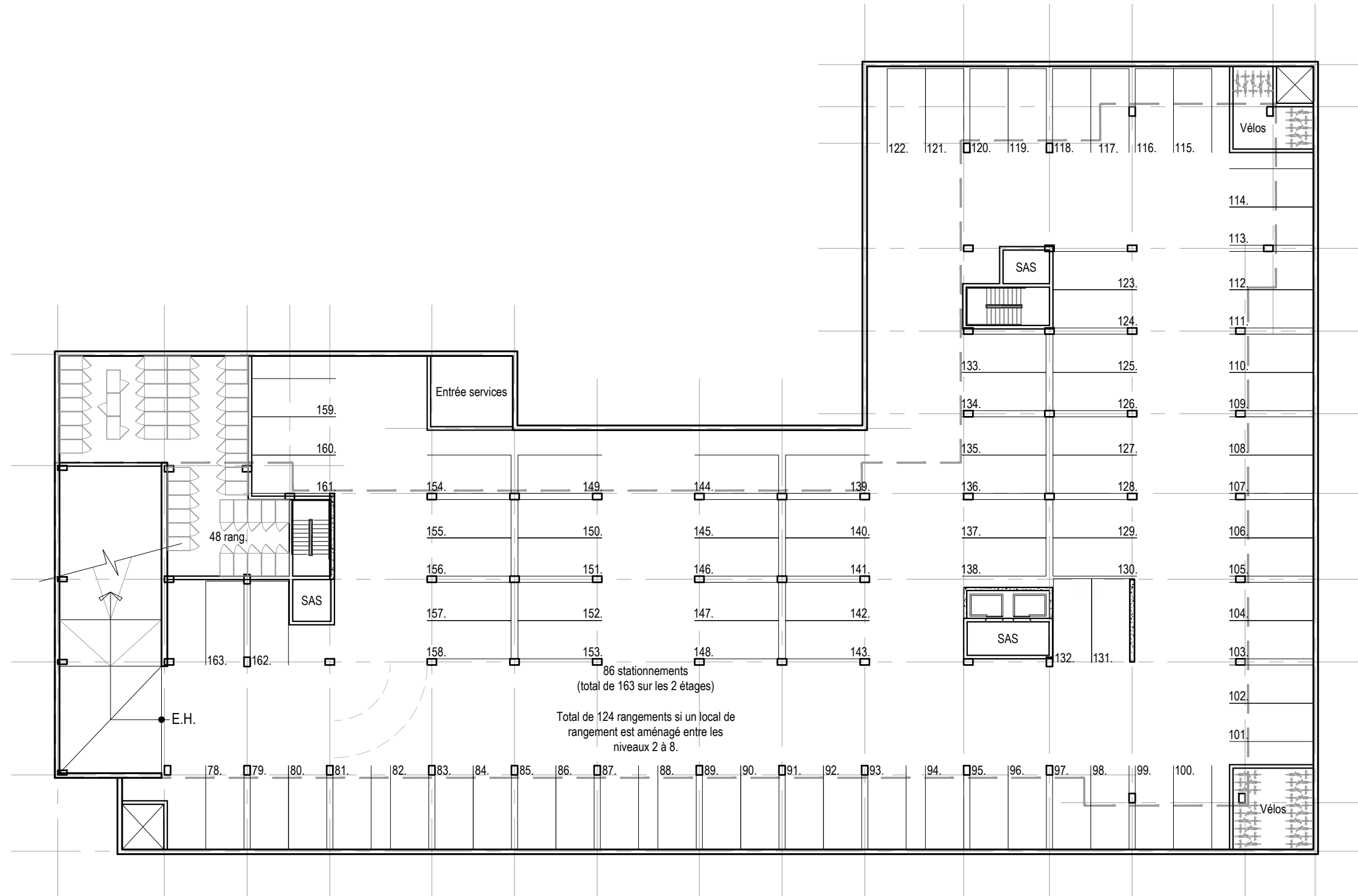


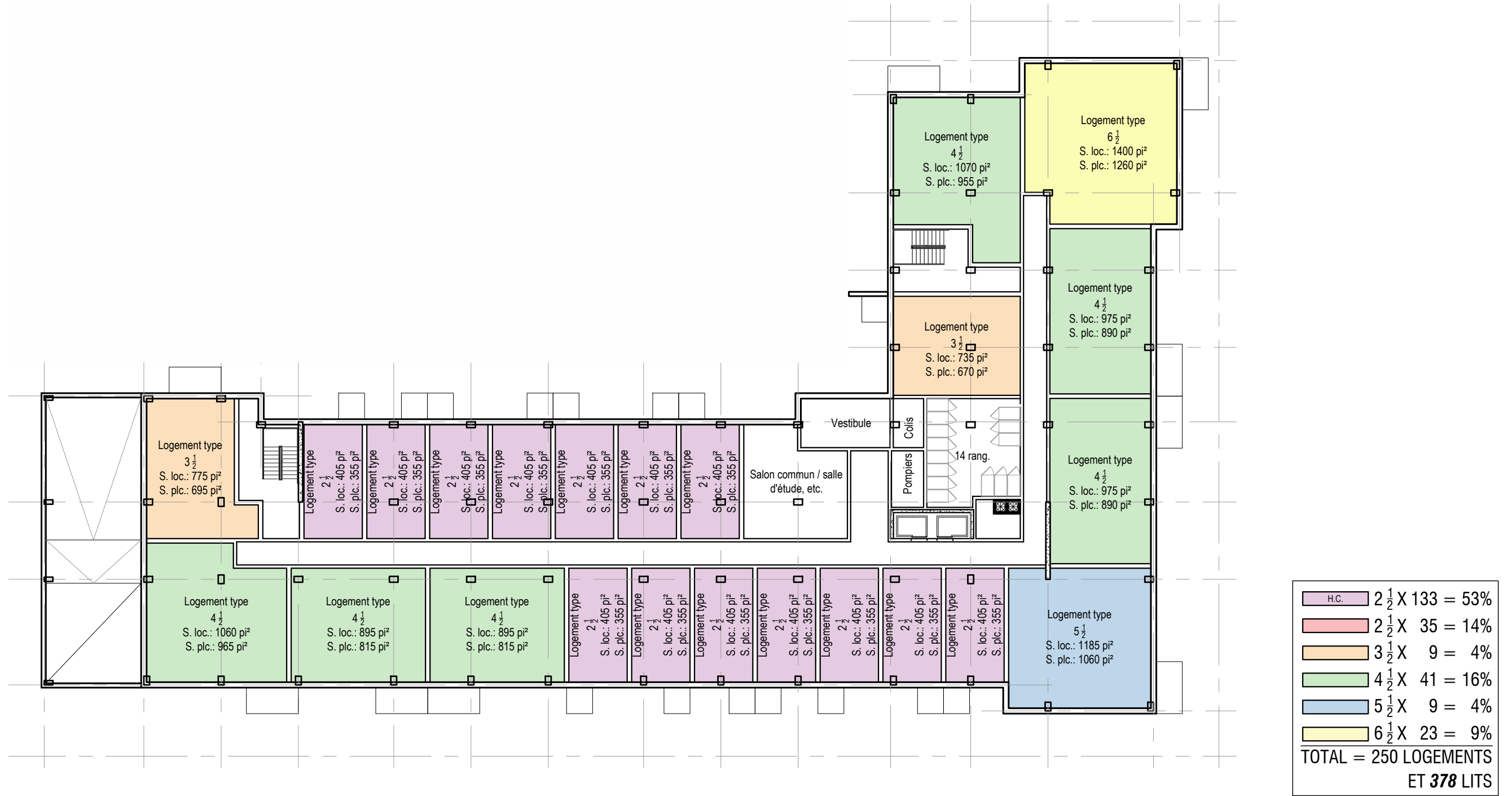
NIVEAUX	AIRES LOCATIVES
1	15 595,01 pi ²
2	18 303,86 pi ²
3	18 303,86 pi ²
4	18 303,86 pi ²
5	18 303,86 pi ²
6	18 303,86 pi ²
7	18 303,86 pi ²
8	18 303,86 pi ²
9	15 149,80 pi ²
	158 871,83 pi ²

NIVEAUX	AIRES PLANCHERS
1	13 934,54 pi ²
2	16 303,53 pi ²
3	16 303,53 pi ²
4	16 303,53 pi ²
5	16 303,53 pi ²
6	16 303,53 pi ²
7	16 303,53 pi ²
8	16 303,53 pi ²
9	13 530,44 pi ²
	141 589,69 pi ²

ZONE GAZONNÉE DANS LE LOT: 32,2%
SUPERFICIE DU BÂTIMENT: 21 755 pi²

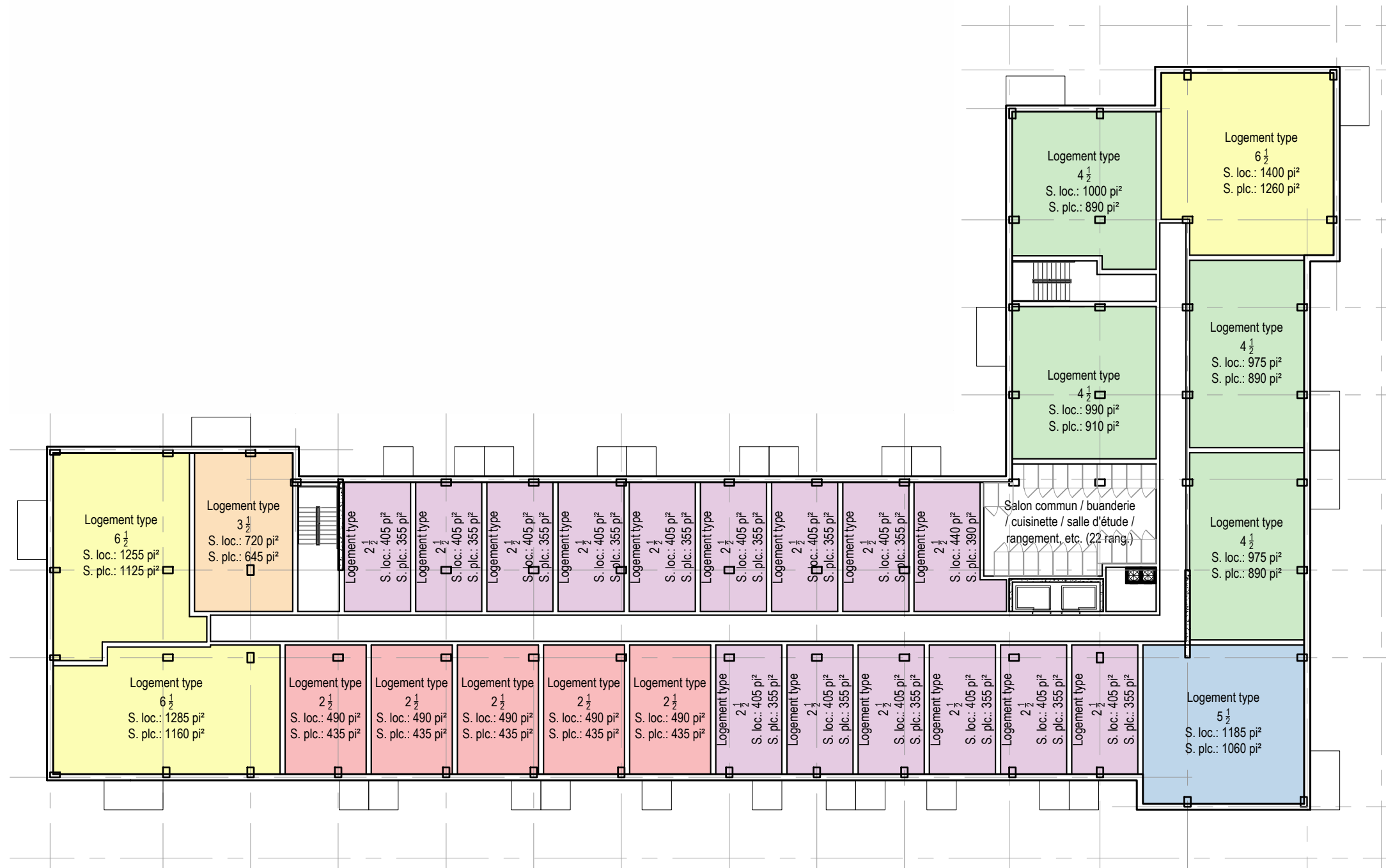






HABITATION COLLECTIVE: 53,2%
HABITATION STANDARD: 46,8%

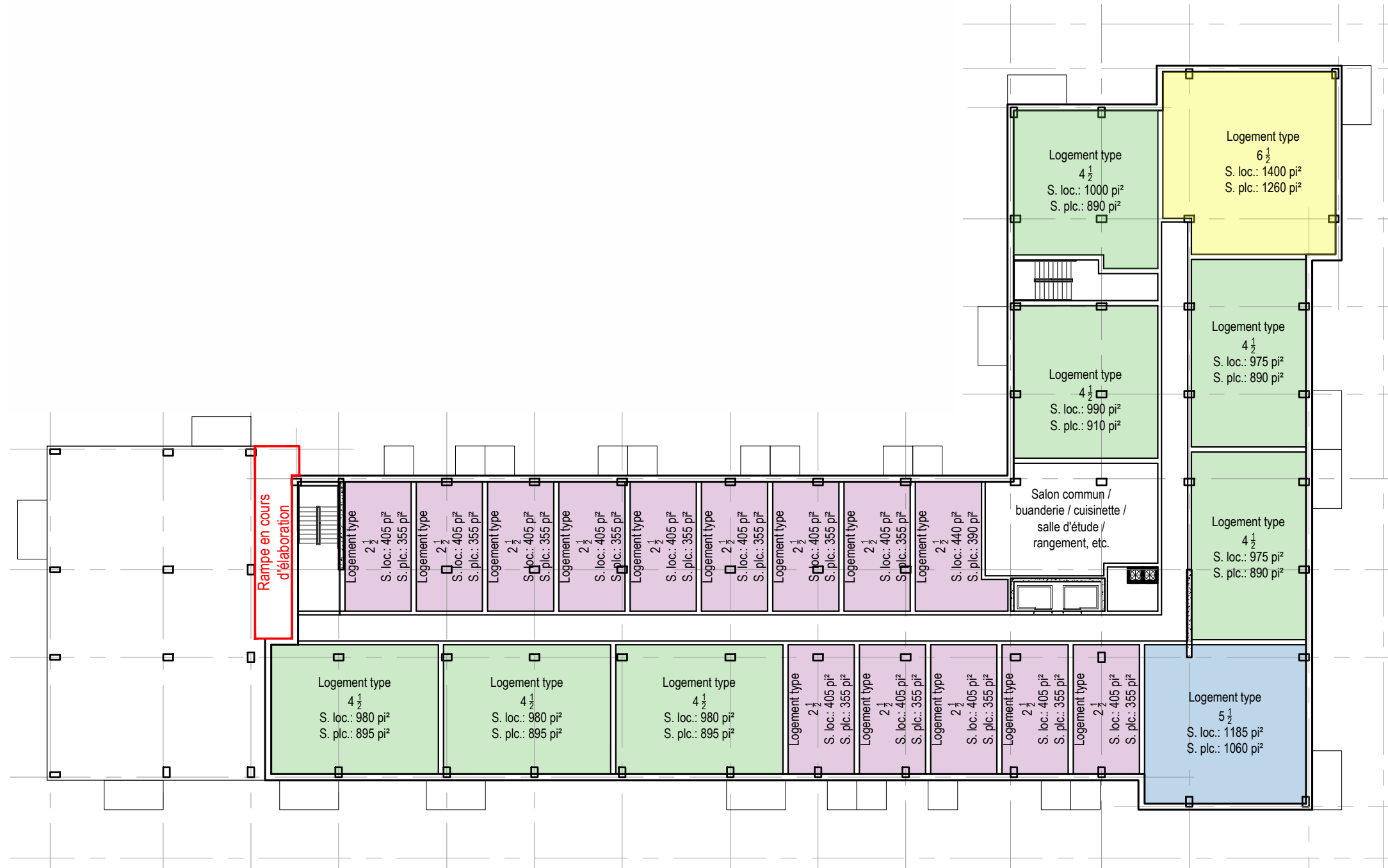
NIVEAU 1
ÉCH.: 1" = 25'-0"



H.C.	$2\frac{1}{2} \times 133$	= 53%
	$2\frac{1}{2} \times 35$	= 14%
	$3\frac{1}{2} \times 9$	= 4%
	$4\frac{1}{2} \times 41$	= 16%
	$5\frac{1}{2} \times 9$	= 4%
	$6\frac{1}{2} \times 23$	= 9%
TOTAL = 250 LOGEMENTS		
ET 378 LITS		

HABITATION COLLECTIVE: 53,2%
HABITATION STANDARD: 46,8%

NIVEAUX 2 À 8
ÉCH.: 1" = 25'-0"



H.C.	2 1/2 X 133 = 53%
	2 1/2 X 35 = 14%
	3 1/2 X 9 = 4%
	4 1/2 X 41 = 16%
	5 1/2 X 9 = 4%
	6 1/2 X 23 = 9%
TOTAL = 250 LOGEMENTS	
ET 378 LITS	

HABITATION COLLECTIVE: 53,2%
 HABITATION STANDARD: 46,8%

NIVEAU 9
 ÉCH.: 1" = 25'-0"



HABITATION COLLECTIVE: 53,2%
 HABITATION STANDARD: 46,8%

NIVEAUX 2 À 8
 ÉCH.: 1"=25'-0"



CRÉATIVITÉ
 AUTHENTICITÉ
 SAVOIR-FAIRE