



HERO[®] 100E ERV

Item #: **#525555**

Operating mode: **MERV 3 (default)**

ERV/HRV for balanced ventilation in single- and multi-family homes

The HERO residential systems with heat or energy recovery improve indoor air quality (IAQ) and help lower the project's HERS score.

• Heat & Energy Recovery Ventilators (HRVs/ERVs)

- Airflows* up to 252 cfm at 0.4" w.g.
- 5" duct connection (HERO 100E, 120H, and 120E-EC)
- 6" duct connection (all other models)
- Rubberized duct gaskets on metal collars
- Optional MERV 8 (all models) and MERV 13 (except for HERO 100E, 120H, and 120E-EC) filters
- Integrated balancing taps for commissioning
- Energy-efficient counterflow core with SRE* up to 85% (0C/32F)
- Front access for fast and easy maintenance
- Improves the home's HERS score towards a NetZero status and lowers energy costs
- Certifications: CSA, HVI, ENERGY STAR
- Limited warranty
- *For airflow and SRE details on specific models, see the Diagram and Performance sections on this page

[Find more details in our online catalogue](#)

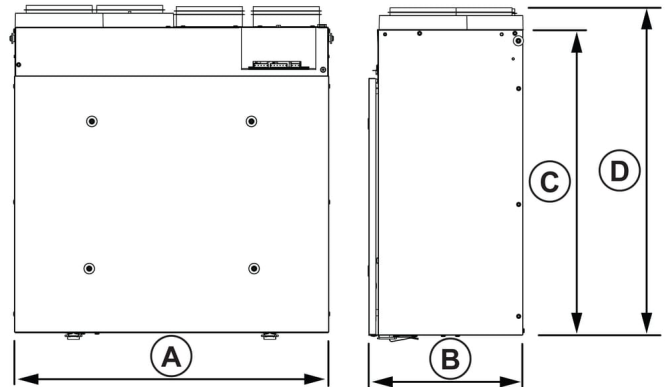
Technical parameters

Product	
Voltage (nominal)	120 V
Phases	1~
Input power	120 W
Input current	1 A
Air flow	48 L/s
Certificate	CSA, HVI, ENERGY STAR
Exchanger	
Recovery type	Energy recovery
Dimensions and weights	
Weight	46.7 lb
Other	
Installation type	Vertical

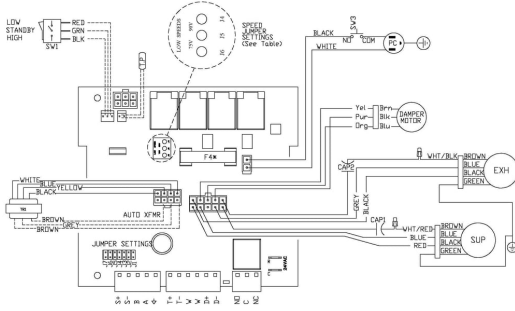
Dimension

Model	A	B	C	D	Duct Size
HERO 100E	23 1/4 (590)	11 1/2 (291)	22 5/8 (575)	24 1/4 (616)	5 (127)
HERO 120H	23 1/4 (590)	11 1/2 (291)	22 5/8 (575)	24 1/4 (616)	5 (127)
HERO 150H	27 7/8 (707)	13 3/8 (341)	23 (584)	24 7/8 (626)	6 (152)
HERO 200H	27 7/8 (707)	15 3/8 (391)	23 (584)	24 7/8 (626)	6 (152)
HERO 150H-EC	27 7/8 (707)	13 3/8 (341)	23 (584)	24 7/8 (626)	6 (152)
HERO 250H-EC	27 7/8 (707)	15 3/8 (391)	23 (584)	24 7/8 (626)	6 (152)

Dimensions in inches (mm).



Wiring



Model	J1	J2	J3	J4	J5	J6	J7	J8	J9	J10	J11	J12	J13	J14	J15	J16	J17	J18	J19	J20	Low Speed Jumper Settings
100 CFM (HRV)	ON	OFF	OFF	OFF	OFF	OFF	OFF	OFF	OFF	OFF	OFF	OFF	OFF	OFF	OFF	OFF	OFF	OFF	OFF	OFF	75V
150 CFM (HRV)	ON	OFF	OFF	OFF	OFF	OFF	OFF	OFF	OFF	OFF	OFF	OFF	OFF	OFF	OFF	OFF	OFF	OFF	OFF	OFF	
200 CFM (HRV)	ON	OFF	OFF	OFF	OFF	OFF	OFF	OFF	OFF	OFF	OFF	OFF	OFF	OFF	OFF	OFF	OFF	OFF	OFF	OFF	

*#4 is BA Fast Acting with IOT > 104
 ----- Low voltage factory wiring
 _____ Line voltage factory wiring

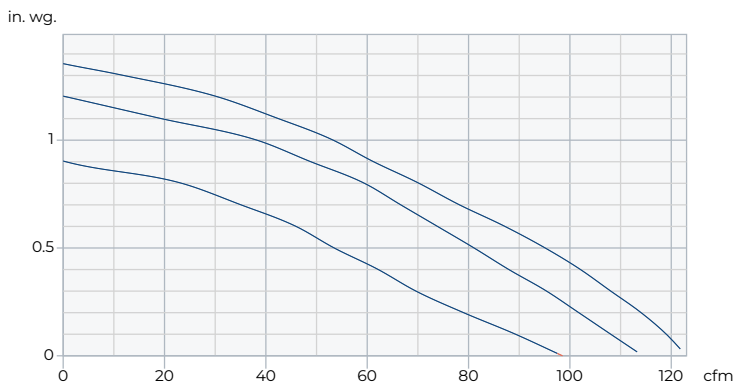
Performances

	Supply temperature	Net airflow	Consumed power	Sensible recovery efficiency	Adjusted sensible recovery efficiency	Latent recovery/moisture transfer
	°F (°C)	cmf (L/s)	W	%	%	
Heating	32 (0)	42 (20)	42	82	88	0.79
	32 (0)	70 (33)	60	77	82	0.71
	32 (0)	117 (55)	91	70	75	0.63
	-13 (-25)	58 (12)	72	60	63	0.57
	Supply temperature	Net airflow	Consumed power	Total recovery efficiency	Adjusted total recovery efficiency	Latent recovery/moisture transfer
	°F (°C)	cmf (L/s)	W	%	%	
Cooling	95 (35)	42 (20)	46	70	75	0.72
	95 (35)	117 (55)	98	57	61	0.56

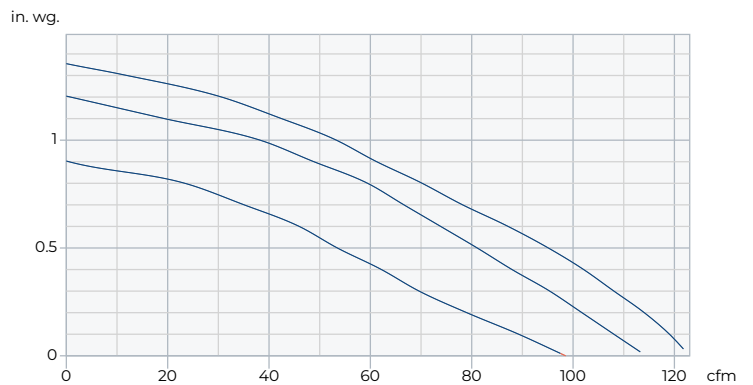
⚠ Recommended low airflow is outside valid range

⚠ Recommended high airflow is outside valid range

Supply - Performance curve



Extract - Performance curve



Unit	Supply	Extract
Air density		0.075 lb/ft ³

AHU Accessories

- CO2 Sensor (99315)
- ECO-Feel @ Auto IAQ control (414729)
- FIDT 5 Insulated Flex Duct (411062)
- Kit,Contractor,Airflow Balance (463311)
- MG55 Metal Supply Grill (411369)
- RTS2 (40164)
- RTS5 (44794)

- COM5P (40223)
- ECO-Touch @ Auto IAQ control (414727)
- Filter,MERV8,CNTRflow,120cfm (428525)
- Kit,Wall Support,APCrossflow (463942)
- RTS-W Wireless timer (414920)
- RTS4 Push-button timer (415516)

Documents

- 428486 HERO IOM EN FR.pdf
- 527088 HERO 100E Spec Sheet
- 528831 HERO 100E Submittal Sheet
- CSI Specification - HERO Series
- E1991 HERO-ATMO Brochure EN
- E1994_FAA_SELECTION_RESIDENTIAL.PDF
- E2014 Replacement Filters EN
- E400060_HERO_120H_DIMENSIONAL_SUBMITTAL.PDF