



HERO Fresh air appliances

ERV/HRV for balanced ventilation in single- and multi-family homes

The HERO residential systems with heat or energy recovery improve indoor air quality (IAQ) and help lower the project's HERS score.

• **Heat & Energy Recovery Ventilators (HRVs/ERVs)**

- Airflows* up to 252 cfm at 0.4" w.g.
- 5" duct connection (HERO 100E and HERO 120H)
- 6" duct connection (all other models)
- Rubberized duct gaskets on metal collars
- Optional MERV 8 (all models) and MERV 13 (except for HERO 100E and 120H) filters
- Integrated balancing taps for commissioning
- Energy-efficient counterflow core with SRE* up to 84% (0C/32F)
- Front access for fast and easy maintenance
- Improves the home's HERS score towards a NetZero status and lowers energy costs
- Certifications: CSA, HVI, ENERGY STAR
- Limited warranty
- *For airflow and SRE details on specific models, see the Diagram and Performance sections on this page

[Find more details in our online catalogue](#)

Energy Efficiency

Recovers up to 84% of the energy from the extracted air and uses it to temper the incoming fresh air, optimizing the energy required to pre-cool or pre-heat the fresh outside air.

Improved Indoor Air Quality

HERO® appliances supply fresh, tempered air into indoor spaces while removing excess moisture, ensuring a healthy, comfortable living environment.

Easy Installation & Maintenance

HERO® appliances include rubberized duct seals and easy-connect ports for simple set-up. Unobstructed front access allows for quick cleaning and easy maintenance.

ENERGY STAR® Certified

These appliances have been designed to meet the latest and most stringent ENERGY STAR® requirements, making them even more dependable, efficient, and simple to install.

Certifications



CSA Mark

This product has been rigorously tested to applicable standards written or administered by the ANSI, UL, CSA, NSF, and other North American and global organisations.



Energy Star

Independently certified to meet strict standards for energy efficiency set by the United States Environmental Protection Agency (US EPA) and Department of Energy (DoE).



HVI Certified

HVI certification is a voluntary third-party certification programme to verify performance of residential ventilation products, in accordance with HVI/ANSI consensus test standards. Visit the HVI-Certified Products Directory to learn more.

In the Box

This appliance comes with a wall mount, an external electrical box with easy-connect ports, integrated in-door manometer ports, and duct ports with plastic collar shrouds with integrated backdraft for simple, fast installation.

Technical parameters

Product		
Voltage (nominal)	120	V
Phases	1~	
Input power	120	W
Input current	1	A
Air flow	52	L/s
Certificate	CSA, HVI, ENERGY STAR	

Exchanger	
Recovery type	Heat recovery

Dimensions and weights	
Weight	18.75 kg

Other	
Installation type	Vertical

Performances

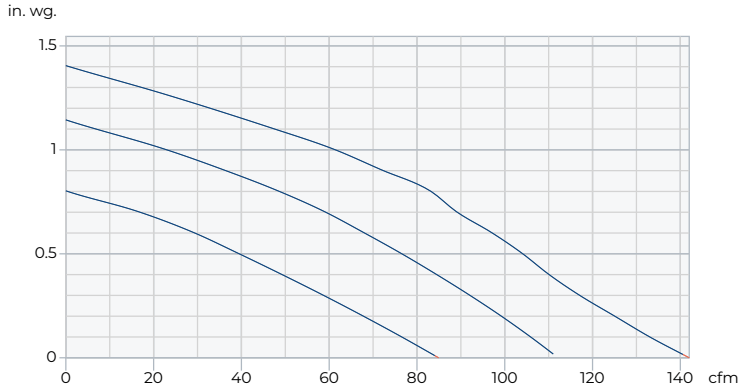
	Supply temperature	Net airflow	Consumed power	Sensible recovery efficiency	Adjusted sensible recovery efficiency	Latent recovery / moisture transfer
	°F (°C)	cfm (L/s)	W	%	%	
Heating	32 (0)	68 (32)	56	80	85	0.00
	32 (0)	97 (46)	74	78	83	0.00
	32 (0)	117 (55)	90	76	81	0.00
	-13 (-25)	72 (34)	73	64	67	0.07

Performance

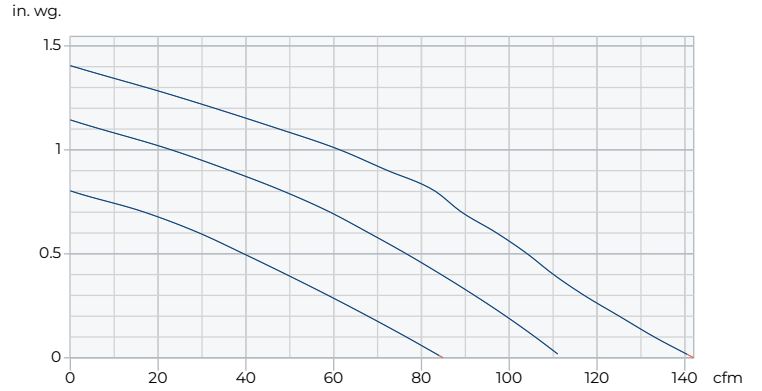
⚠ Recommended low airflow is outside valid range

⚠ Recommended high airflow is outside valid range

Supply - Performance curve



Extract - Performance curve



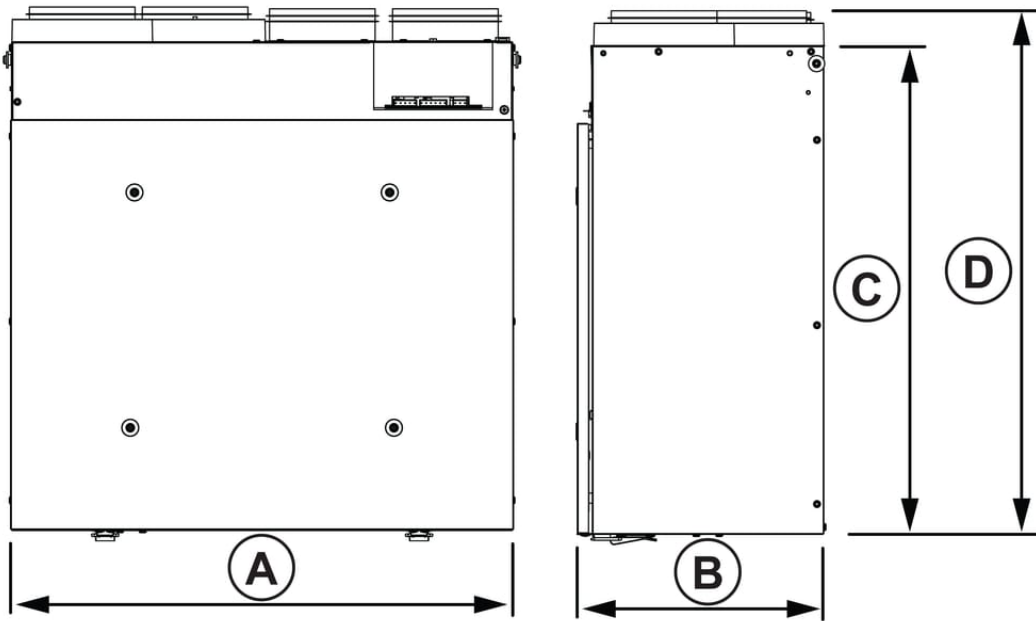
Unit	Supply	Extract
------	--------	---------

Air density	0.075 lb/ft ³	
-------------	--------------------------	--

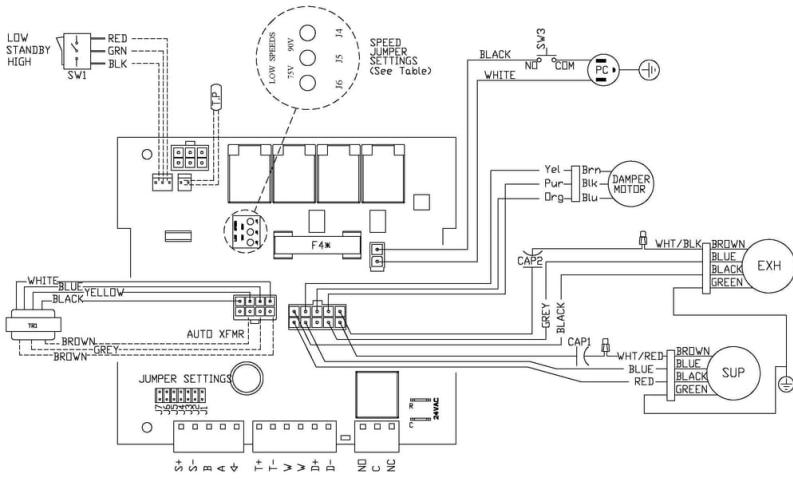
Dimension

Model	A	B	C	D	Duct Size
HERO 100E	23 1/4 (590)	11 1/2 (291)	22 5/8 (575)	24 1/4 (616)	5 (127)
HERO 120H	23 1/4 (590)	11 1/2 (291)	22 5/8 (575)	24 1/4 (616)	5 (127)
HERO 150H	27 7/8 (707)	13 3/8 (341)	23 (584)	24 7/8 (626)	6 (152)
HERO 200H	27 7/8 (707)	15 3/8 (391)	23 (584)	24 7/8 (626)	6 (152)
HERO 150H-EC	27 7/8 (707)	13 3/8 (341)	23 (584)	24 7/8 (626)	6 (152)
HERO 250H-EC	27 7/8 (707)	15 3/8 (391)	23 (584)	24 7/8 (626)	6 (152)

Dimensions in inches (mm).



Wiring



Model	JUMPER SETTINGS							Low Speed Jumper Settings
	J7	J6	J5	J4	J3	J2	J1	
100 CFM (ERV)	ON	OFF	OFF	OFF	ON	OFF	ON	75V
120 CFM (HRV)	ON	OFF	OFF	OFF	OFF	OFF	ON	
150 CFM (HRV)	ON	ON	OFF	OFF	OFF	OFF	OFF	
200 CFM (HRV)	ON	ON	OFF	OFF	OFF	OFF	OFF	

*F4 is 8A Fast Acting with I2T > 184
 ----- Low voltage Factory wiring
 - - - - - Line voltage factory wiring

AHU Accessories

- CO2 Sensor (99315)
- ECO-Feel® Auto IAQ control (414729)
- FIDT 5 Insulated Flex Duct (411062)
- Kit,Contractor,Airflow Balance (463311)
- MGE5 Metal Exhaust Grill (411370)
- RTS-W Wireless timer (414920)
- RTS4 Push-button timer (415516)
- COM5P (40223)
- ECO-Touch® Auto IAQ control (414727)
- Filter,MERV8,CNTRflow,120cfm (428525)
- Kit,Wall Support,APCrossflow (463942)
- MGS5 Metal Supply Grill (411369)
- RTS2 (40164)
- RTS5 (44794)

Documents

- 428486 HERO IOM EN FR.pdf
- 444775 HERO 120H Spec Sheet.pdf
- CSI Specification - HERO Series
- E1991 HERO-ATMO Brochure EN
- E2014 Replacement Filters EN
- E400060_HERO_120H_DIMENSIONAL_SUBMITTAL.PDF