



Submittal Data Sheet

18 Ton, 230V, VRV EMERION HP

RXYQ216AATJA

FEATURES

- New Simple and Stylish design with expanded line up with single-module units from 6-20T and dual-modules up to 40T
- Space-saving 16 - 20 T single module units provide up to 34% footprint and up to 500 lbs./unit weight reduction compared to previous series
- High energy efficiency with IEERs up to 28.5 delivers up to 30% efficiency increase
- Year-round comfort and energy saving with Daikin's Variable Refrigerant Temperature Technology (VRT)
- Heating down to -13°F as standard and high heating capacities at 17°F make it an ideal choice for all-electric heat pump solutions
- Hot gas defrost circuit allows for installation without base pan heater
- High dust moisture protection with an IP55 rated sealed E-box
- Dual-Fuel ready with connectivity to Daikin communicating gas furnace or all-electric heat pump heating for optimized operational cost based on utility rates
- Increased piping lengths of up to 361 ft. vertical separation between ODU and IDU provide additional application flexibility compared to previous VRV systems
- Design flexibility to enlarge system from single to a dual-module without changes to installed main pipe sizes for phased installation or tenant fit-out buildings
- Local code compliance-ready from factory via alignment with compliance needs, such as OSHPD Seismic, Miami Dade Wind, and Chicago Pressure relief code
- Reduced wiring costs with up to 27.4% reduction in MCA values compared to previous series
- Engineered for ease of installation and service with three-segment panel design
- Factory ships with increase space for easy field piping connection to service valves
- Built-in data recorder to store up to 40 minutes of operational data
- Integrates with new Daikin HERO ecosystem, an IoT -based remote monitoring and diagnostics platform
- Connect non standard VRV terminal units and AHUs with Daikin VRV EMERION leveraging Daikin Air Handling Unit Integration Kit to extend benefits of inverter technology to custom terminal units and AHUs. A kit consists of One Control Box and One EEV box. Offered via EKEQMCAV3-US and EKEQFCBAV3-US.





Submittal Data Sheet

18 Ton, 230V, VRV EMERION HP
RXYQ216AATJA

PERFORMANCE

Outdoor Unit Model No.	RXYQ216AATJA	Outdoor Unit Name:	18 Ton, 230V, VRV EMERION HP
Type:	Heat Pump	Unit Combination:	
Rated Cooling Conditions:	Indoor (°F DB/WB): 80 / 67 Ambient (°F DB/WB): 95 / 75	Rated Heating Conditions:	Indoor (°F DB/WB): 70 / 60 Ambient (°F DB/WB): 47 / 43
Rated Piping Length(ft):			
Rated Height Difference (ft):			
Rated Cooling Capacity (Btu/hr):	206,000	Rated Heating Capacity (Btu/hr):	232,000
Nom Cooling Capacity (Btu/hr):	216,000	Nom Heating Capacity (Btu/hr):	243,000
Cooling Input Power (kW):		Heating Input Power (kW):	
EER (Non-Ducted/Ducted):	11.01 / 10.90	Heating COP (Non-Ducted/Ducted):	3.6 / 3.3
IEER (Non-Ducted/Ducted):	22.20 / 21.00	Heating COP 17F (Non-Ducted/Ducted):	2.2 / 2.1

OUTDOOR UNIT DETAILS

Power Supply (V/Hz/Ph):	208-230 / 60 / 3	Compressor Stage:	
Power Supply Connections:		Capacity Control Range (%):	3 - 100
Min. Circuit Amps MCA (A):	67.2	Capacity Index Limit:	-
Max Overcurrent Protection (MOP) (A):	70	Airflow Rate (H) (CFM):	14510
Max Starting Current MSC(A):		Gas Pipe Connection (inch):	1-1/8
Rated Load Amps RLA(A):		Liquid Pipe Connection (inch):	5/8
Dimensions (Height) (in):	65-3/8	H/L Pressure Connection (inch)	
Dimensions (Width) (in):	68-7/8	H/L Equalizing Connection (inch)	
Dimensions (Depth) (in):	30-1/8	Sound Pressure (H) (dBA):	68
Net Weight (lb):	904	Sound Power Level (dBA):	

Submittal Data Sheet

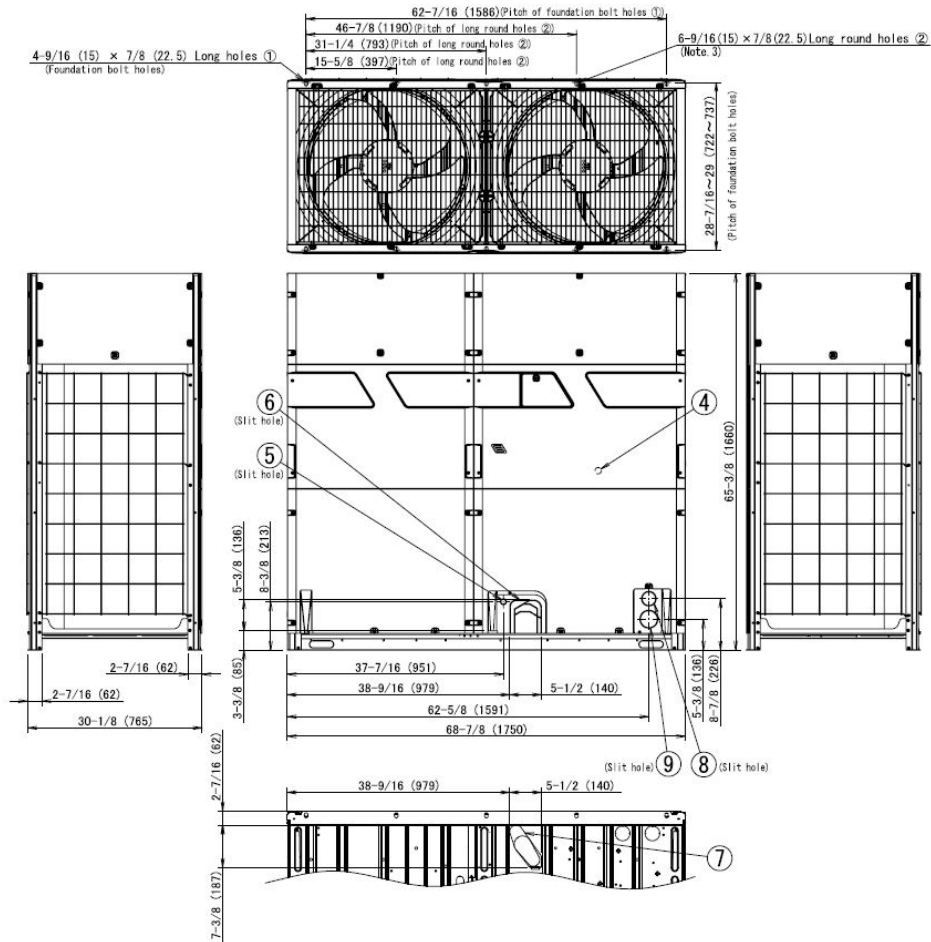
18 Ton, 230V, VRV EMERION HP

RXYQ216AATJA

SYSTEM DETAILS

Refrigerant Type:	R-410A	Cooling Operation Range (°F DB):	23 - 110
Holding Refrigerant Charge (lbs):	25.8	Heating Operation Range (°F WB):	-13 - 60
Additional Charge (oz/ft):		Max. Pipe Length (Vertical) (ft):	295
Pre-charge Piping (Length) (ft):		Cooling Range w/Baffle (°F DB):	-
Max. Pipe Length (Total) (ft):	540		
Max Height Separation (Ind to Ind ft):			

DIMENSIONAL DRAWING





Submittal Data Sheet

18 Ton, 230V, VRV EMERION HP

RXYQ216AATJA

ACCESSORIES

PART NUMBER	DESCRIPTION	INCLUDED
-------------	-------------	----------

0252V00005S	GRILL ASSEMBLY SRV LRG	No
750-479	Wago-2 Channel AI Module (VDC)	No
BHFP22P100U	Heat Pump / Dual Module Multi Connection Piping Kit	No
BHFP22P100UA	Heat Pump / Dual Module Multi Connection Piping Kit	No
BRP2A81	ABC Terminal (For Heat Lock Out, C_H changeover)	No
DACA-99STK-1	DAIKIN OEM TOOL KIT W/BAG-32PC	No
DACA-CFK-1	Conical Flaring Kit (Flaring Block & Eccentric Cone)	No
DACA-DT-1	Deburring Tool	No
DACA-FSG-1	FLARE SIZE GAUGE	No
DACA-IMO-PRN	I-Manager III Printer Option	No
DACA-IMO-SPC	I-Manager III Sub PC option	No
DACA-IMP-1024	I-Manager III Standard Package - up to 1024 indoor unit groups (16 DIII net systems)	No
DACA-IMP-128	I-Manager III Standard Package - up to 128 indoor unit groups (2 DIII net systems)	No
DACA-IMP-256	I-Manager III Standard Package - up to 256 indoor unit groups (4 DIII net systems)	No
DACA-IMP-512	I-Manager III Standard Package - up to 512 indoor unit groups (8 DIII net systems)	No
DACA-IMP-768	I-Manager III Standard Package - up to 768 indoor unit groups (12 DIII net systems)	No
DACA-PCWBLACK-1	Control Wire, Plenum Rated, 1000ft	No
DACA-PCWGRAY-1	Control Wire, Plenum Rated, 1000ft	No
DACA-R410GS-1	R-410A Refrigerant Gauge Set	No
DACA-RBTC-1	REPLACEMENT BLADE -TUBE CUTTER	No
DACA-SVA-1	5/16" Schader Valve Adaptor to 1/4" Hose	No
DACA-TC-1	TUBING CUTTER	No
DAM002A71	I-Manager III PPD Option	No

Daikin North America LLC, 19001 Kermier Rd, Waller, TX 77484

Daikin City Generated Submittal Data
DAM004A71

Web software for Intelligent-Manager

www.daikinac.com www.daikincomfort.com
No

(Daikin's products are subject to continuous improvements. Daikin reserves the right to modify product design, specifications and information in this data sheet without notice and without incurring any obligations)



Submittal Data Sheet

18 Ton, 230V, VRV EMERION HP

RXYQ216AATJA

ACCESSORIES

PART NUMBER	DESCRIPTION	INCLUDED
-------------	-------------	----------

DCM002A71	iTM PPD Option	No
DCM601A71	i-Touch Manager (iTM)	No
DCM601A72	iTM D3net Plus Adapter (substitute with DGE601A72/53)	No
DCM601B71	i-Touch Manager (iTM)	No
DCS002A71	iTC PPD Option	No
DCS004A71	iTC Web Option	No
DCS007A51	iTC HTTP Interface Option	No
DCS301C71	Unified On/Off Controller	No
DCS302C71	Centralized Controller	No
DCS601A72	iTC D3net Plus Adapter	No
DCS601C71	i-Touch Controller (iTC)	No
DEC101A51-US2	DIII Net Digital Input Unit (Low Voltage)	No
DEC102A51-US2	DIII Net Digital Input/Output Unit (Low Voltage)	No
DGE601A71	HERO Pro Edge	No
DMS502B71	Interface for use in BACnet	No
DMS504C71	Interface for use in LonWorks (Low Voltage)	No
DPRK04	Emerion Pressure Relief Valve Kit	No
DSE401A71	HERO Simple Edge (US Only)	No
DST301BA61	Schedule Timer	No
DTA109A51	DIII Net Expander PCB	No
KHFP26P100UA	Pipe reducer kit for VRV EMERION ODU multi connection pipe kit	No
KHRP26A22T9	2 Pipe REFNET Joint	No
KHRP26A22TA	2 Pipe REFNET Joint	No
KHRP26A250TA	TWINNING KIT - MULTI PORT	No



Submittal Data Sheet

18 Ton, 230V, VRV EMERION HP

RXYQ216AATJA

ACCESSORIES

PART NUMBER	DESCRIPTION	INCLUDED
-------------	-------------	----------

KHRP26A33T9	2 Pipe REFNET Joint	No
KHRP26A33TA	2 Pipe REFNET Joint	No
KHRP26M22H9	2 Pipe REFNET Header	No
KHRP26M22HA	2 Pipe REFNET Header	No
KHRP26M33H9	2 Pipe REFNET Header	No
KHRP26M33HA	2 Pipe REFNET Header	No
KHRP26M72H9	2 Pipe REFNET Header	No
KHRP26M72HA	2 Pipe REFNET Header	No
KHRP26M72TU9	2 Pipe REFNET Joint	No
KHRP26M72TUA	REFNET Joint, 2 Pipe	No
KJB111A	Fixing Box	No
KJB311AA	Electrical Fixing Box	No
KJB411A	Intelligent-Touch Installation Box	No
KRC19-26A6	COOL/HEAT SELECTOR	No
PCB RXYQ-PTJU	H/P Accessory PCB for 295ft Height Separation	No
TLTWSM	Metric Torque Wrench kit	No
VRV6HGL-K1	Emerion Hail Guard Kit - Large	No
VRV6HGM-K1	Emerion Hail Guard Kit - Small	No
VRV6HGXL-K1	Emerion Hail Guard Kit - X Large	No
VRV6-SHL-FR	Emerion Snow Hood - Large Front	No
VRV6-SHL-T	Emerion Snow Hood - Large Top	No
VRV6-SHM-FR	Emerion Snow Hood - Medium Front	No
VRV6-SHM-T	Emerion Snow Hood - Medium Top	No
VRV6-SH-RL	Emerion Snow Hood - Right And Left	No



Submittal Data Sheet

18 Ton, 230V, VRV EMERION HP

RXYQ216AATJA

ACCESSORIES

PART NUMBER	DESCRIPTION	INCLUDED
-------------	-------------	----------

VRV6-SHXL-FR

Emerion Snow Hood - X Large Front

No

VRV6-SHXL-T

Emerion Snow Hood - X Large Top

No