



A DIVISION OF TRANSFACTOR INDUSTRIES INC.  
 65 BASALTIC RD, CONCORD, ON, CA L4K 1G4  
 TEL: 905-695-8844 • FAX: 905-695-8855  
 WWW.REXPOWERMAGNETICS.COM

## ENERGY EFFICIENT TRANSFORMER

- 1 Phase Isolation
- Dry Type
- ANN Self Cooled

Purchaser: GUILLEVIN INTERNATIONAL CO.  
 PO#: 4647752  
 SWO#: G038688  
 Qty: 1

<b>Approval Drawing</b>	
Please return this drawing and indicate one of the following:	Approved as is <input type="checkbox"/>
	Resubmit as noted <input type="checkbox"/>
App'd by: _____	Date: _____

Coils: Aluminum  
 Cat. No.: SA50J-K/Z3

kVA: 50  
 Primary: 600 Volts  
 Secondary: 120/240 Volts  
 Primary Taps: 2.5 %  
 -Taps FCAN 2  
 -Taps FCBN 2

Frequency: 60 Hz

BIL: 10 kV  
 Insulation Class: 220 °C  
 Temperature Rise: 150 °C  
 Impedance: 4.0 - 6.0 %

Min. Efficiency: 98.3 %  
 ( Calculated @ 35% Loaded )

Weight: 327 Lbs

Windings	For Cable Size	Lugs Terminations
Primary @ Front	#6 AWG up to 2/0 AWG	2/0-6 AWG
Secondary @ Front	#2 AWG up to 600MCM	600MCM-2
Ground lug @ the base of enclosure: 4 ports 2/0-14 AWG		

### Wiring Connection:

#### Primary: H1, H2

Voltage	% Tap	Jumpers To:
630	105.0	1 - 1
615	102.5	2 - 2
600	100.0	3 - 3
585	97.5	4 - 4
570	95.0	5 - 5

#### Secondary: X1, X2, X3, X4

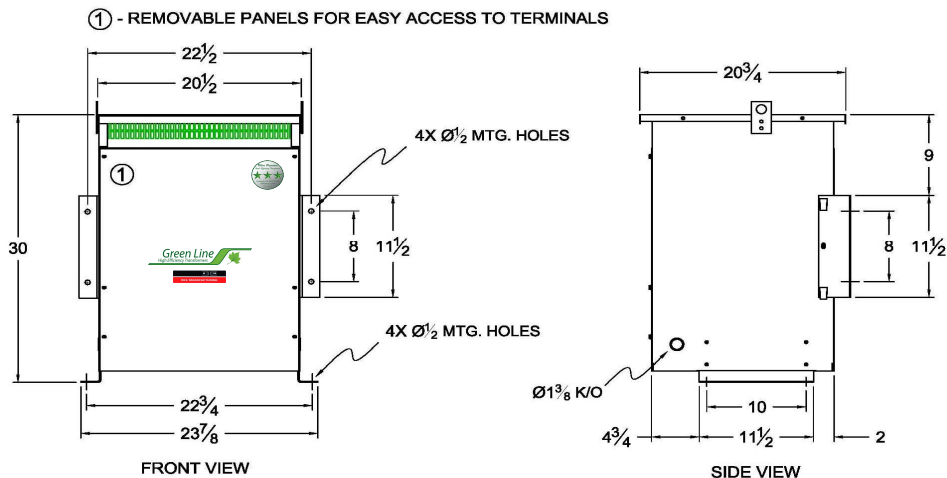
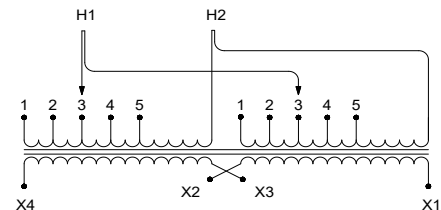
Voltage	Interconnect:	Connect Loads To:
240	X2 to X3	X1 - X4
120	X1 to X3 and X2 to X4	X1/X3 - X2/X4
120/240	X2 to X3	X1-X2-X4 ( X2 is a Neutral )

### Standards:

- 1)- CSA Certified
- 2)- UL Listed

### Standard Features:

- 1)- Anti-vibration pads installed between the enclosure base and the core & coil assembly
- 2)- Lug for Earth grounding provided
- 3)- Transformer meets NRCAN 2019 & DOE 2016 minimum efficiency level



### CSA Enclosure:

- 1)- Type 3R (NEMA 3R)  
 - Sprinklerproof when the angle between sprinkler heads and opening in the enclosure does not exceed 45 degree from the vertical.
- 2)- Ventilated
- 3)- ASA 61 grey
- 4)- Floor/Wall mounting

Rev.	Remarks	By	Appr. By	Date

Prepared by: AP  
 Approved by: VS  
 Date: JULY 22, 2025