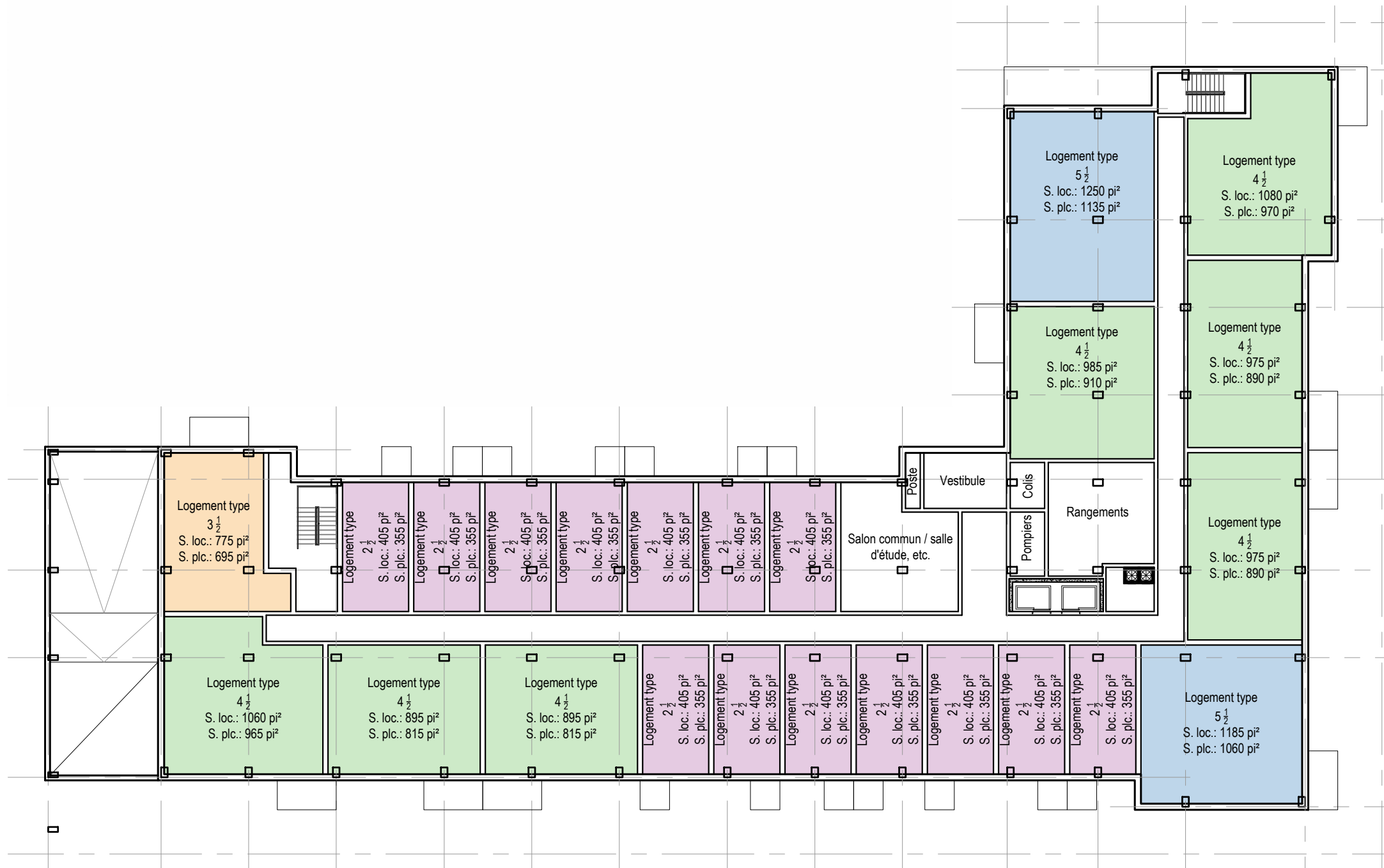


NIVEAUX	AIRES LOCATIVES
1	15 751,91 pi ²
2	18 283,82 pi ²
3	18 283,82 pi ²
4	18 283,82 pi ²
5	18 283,82 pi ²
6	18 283,82 pi ²
7	18 283,82 pi ²
8	18 283,82 pi ²
9	15 139,31 pi ²
	158 868,96 pi ²

NIVEAUX	AIRES PLANCHERS
1	14 103,40 pi ²
2	16 412,08 pi ²
3	16 412,08 pi ²
4	16 412,08 pi ²
5	16 412,08 pi ²
6	16 412,08 pi ²
7	16 412,08 pi ²
8	16 412,08 pi ²
9	13 529,07 pi ²
	142 517,03 pi ²

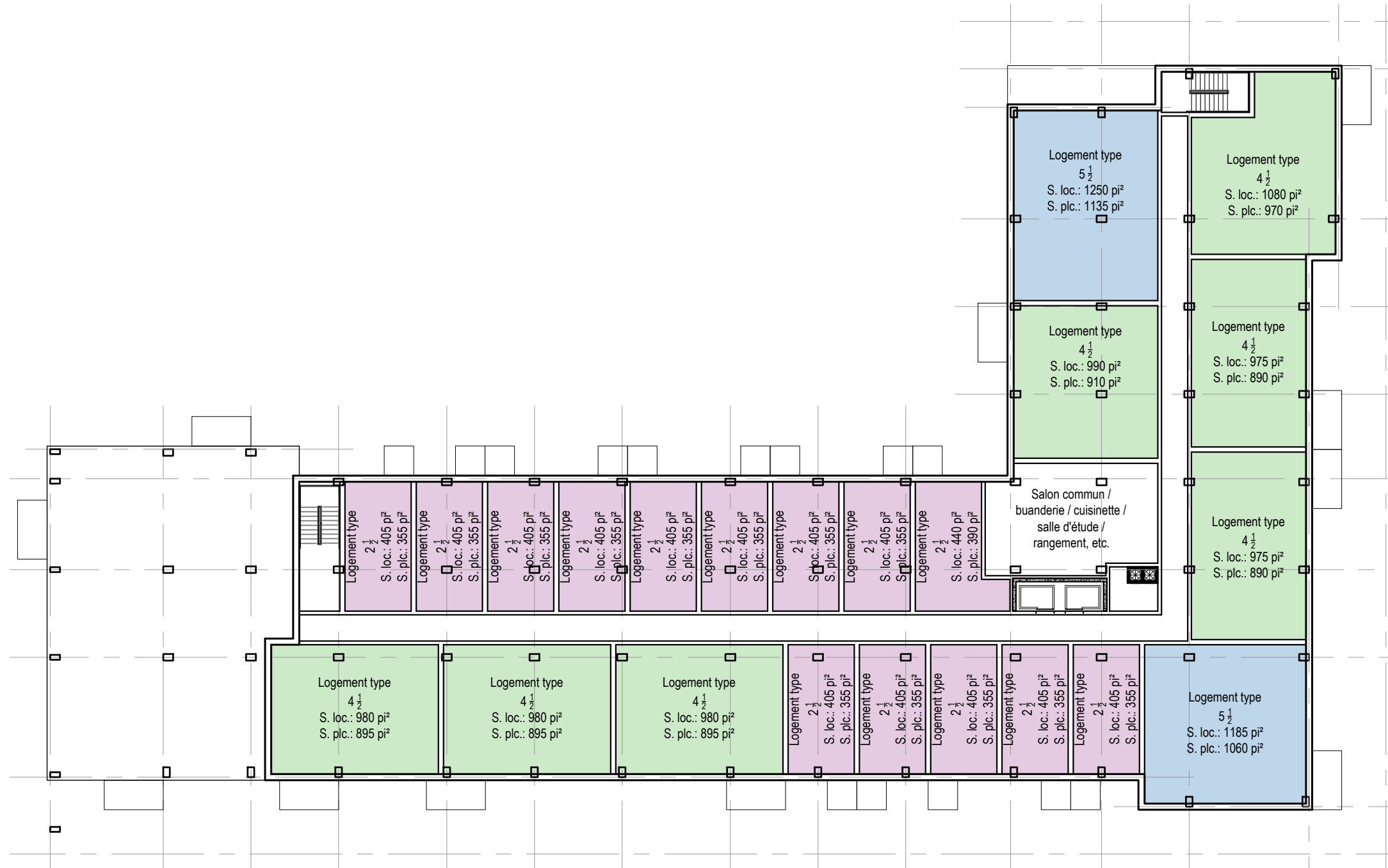
ZONE GAZONNÉE DANS LE LOT: 34,4%
SUPERFICIE DU BÂTIMENT: 21 755 pi²



H.C.	$2\frac{1}{2} \times 133 = 53\%$
	$2\frac{1}{2} \times 35 = 14\%$
	$3\frac{1}{2} \times 8 = 3\%$
	$4\frac{1}{2} \times 42 = 17\%$
	$5\frac{1}{2} \times 11 = 4\%$
	$6\frac{1}{2} \times 21 = 9\%$
TOTAL = 250 LOGEMENTS	
ET 377 LITS	

HABITATION COLLECTIVE: 53,2%
 HABITATION STANDARD: 46,8%

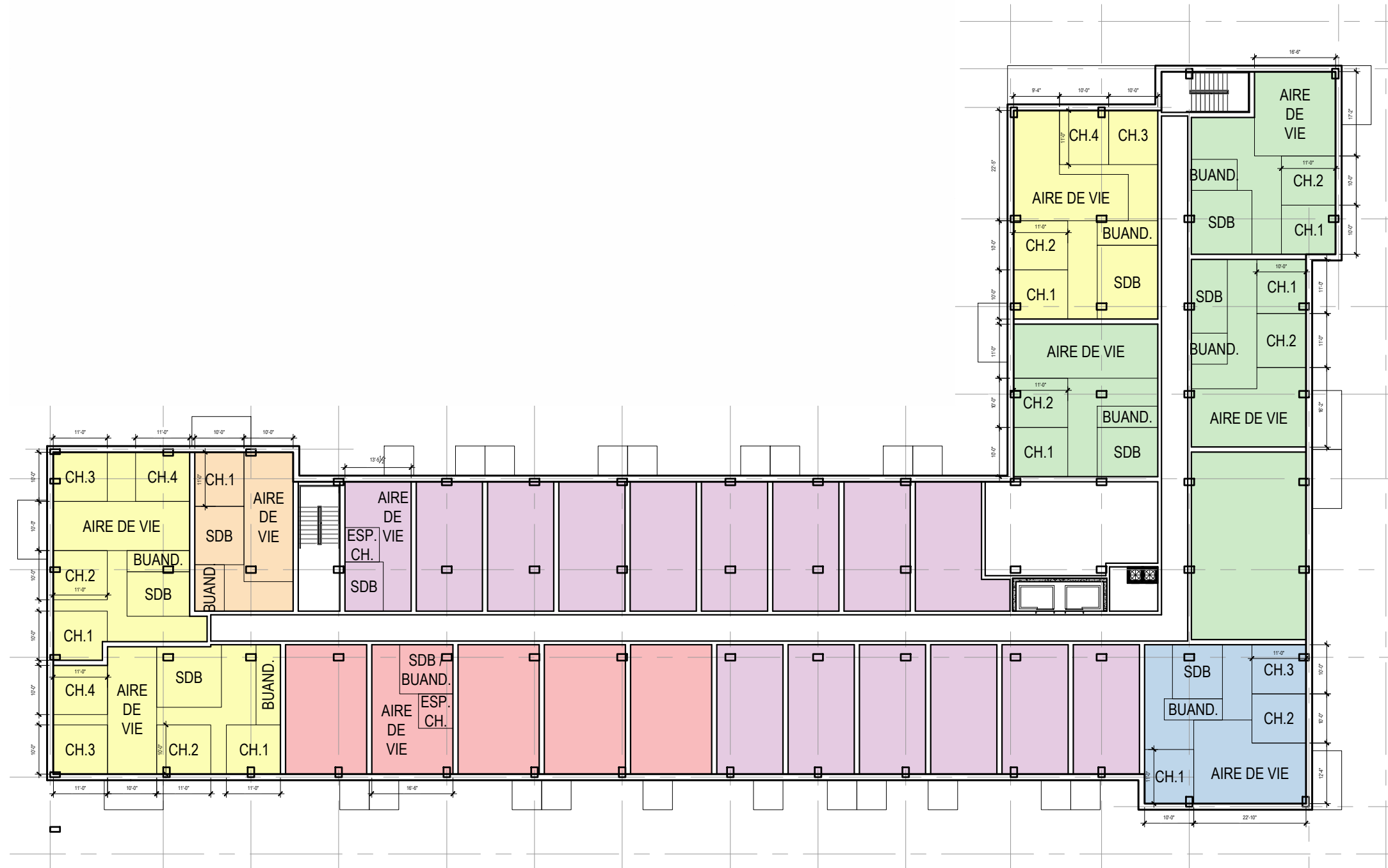
NIVEAU 1
 ÉCH.: 1" = 25'-0"



H.C.	2 1/2 X 133 = 53%
	2 1/2 X 35 = 14%
	3 1/2 X 8 = 3%
	4 1/2 X 42 = 17%
	5 1/2 X 11 = 4%
	6 1/2 X 21 = 9%
TOTAL = 250 LOGEMENTS	
ET 377 LITS	

HABITATION COLLECTIVE: 53,2%
HABITATION STANDARD: 46,8%

NIVEAU 9
ÉCH.: 1"=25'-0"



H.C.	2 1/2 X 133 = 53%
	2 1/2 X 35 = 14%
	3 1/2 X 8 = 3%
	4 1/2 X 42 = 17%
	5 1/2 X 11 = 4%
	6 1/2 X 21 = 9%
TOTAL = 250 LOGEMENTS	
ET 377 LITS	

HABITATION COLLECTIVE: 53,2%
 HABITATION STANDARD: 46,8%

NIVEAUX 2 À 8
 ÉCH.: 1"=25'-0"